

N. 45° 46' E. 5182

7,000 FT. 2179

7,000 FT. 2179

7,000 FT. 2179

N. 74° 49' E. 2586.6

S. 87° 21' E. 2543

S. 87° 44' W. 2568.06 F.

S. 87° 39' W. 2541.66 F.

N. 0° 38' E. 2127.6 F.

N. 0° 38' E. 2127.6 F.

S. 82° 24' W. 1032.24 F.

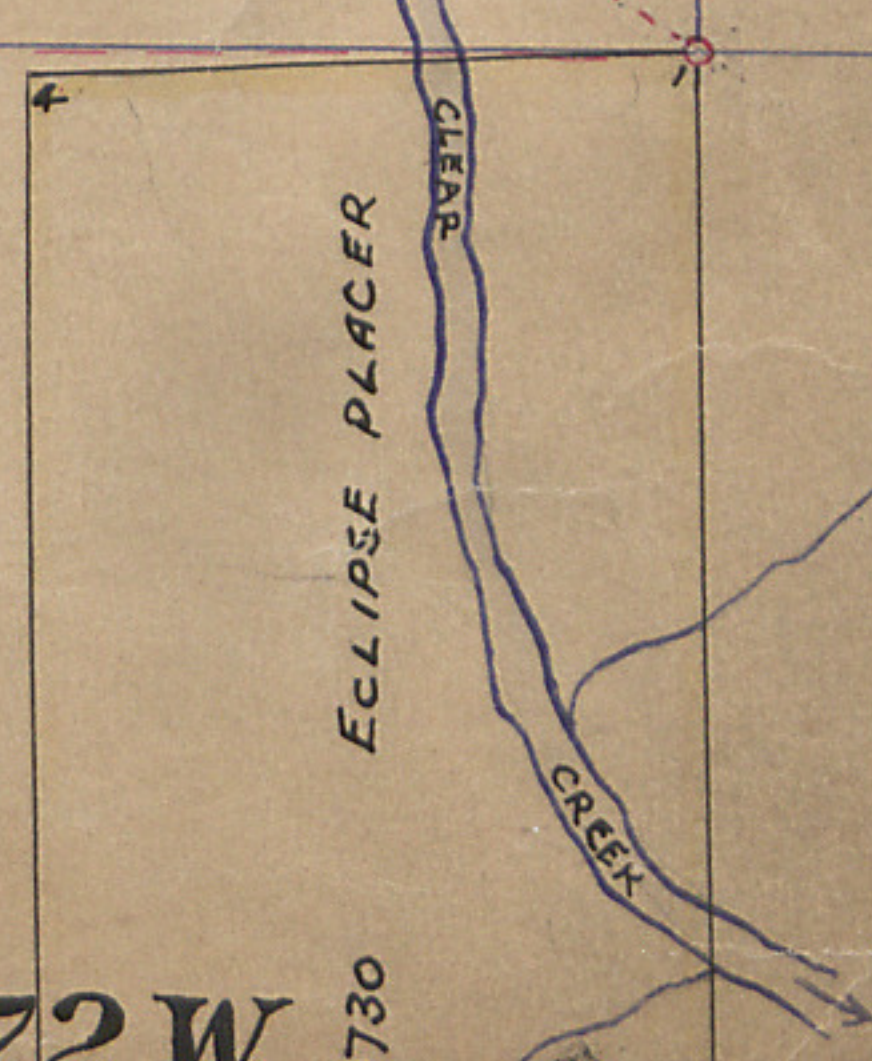
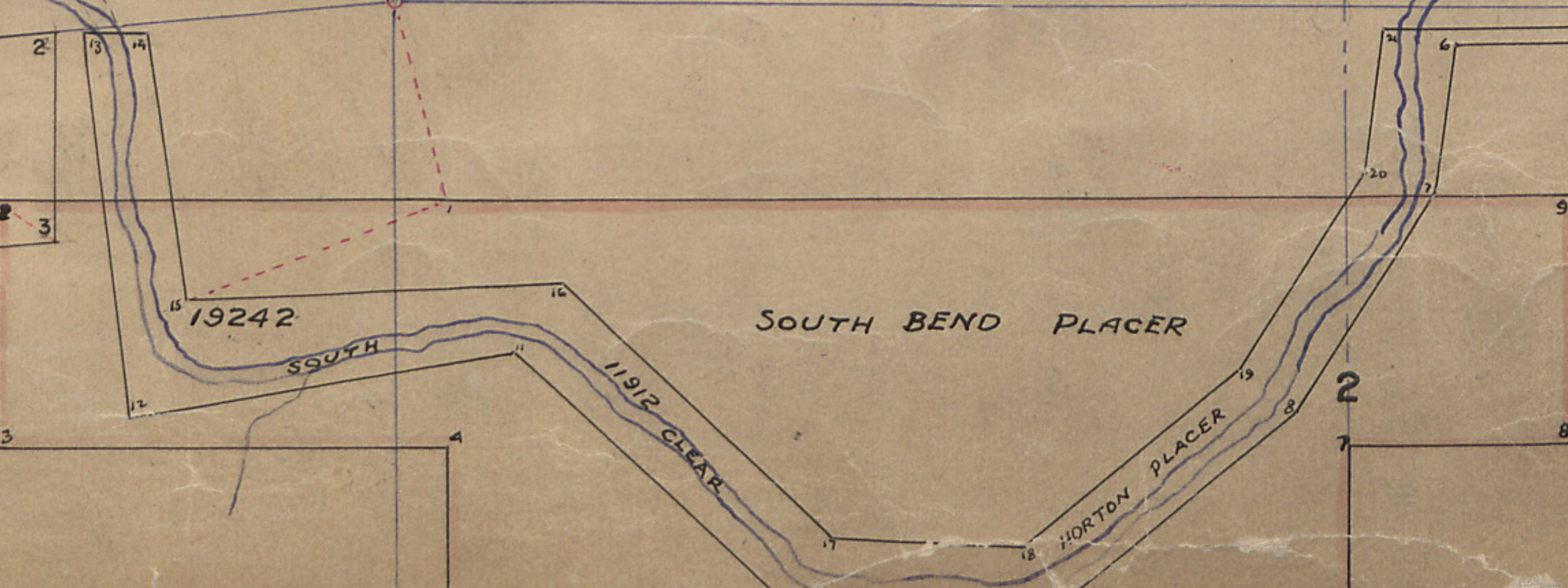
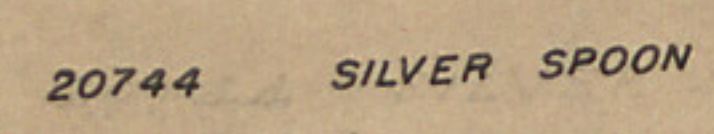
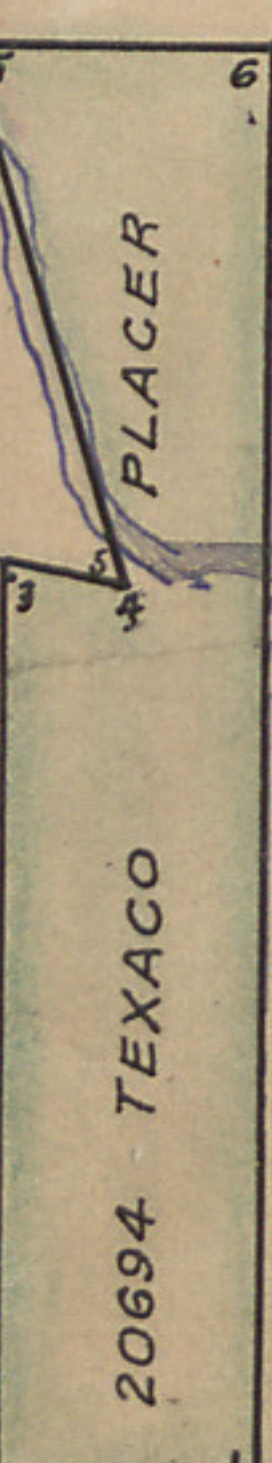
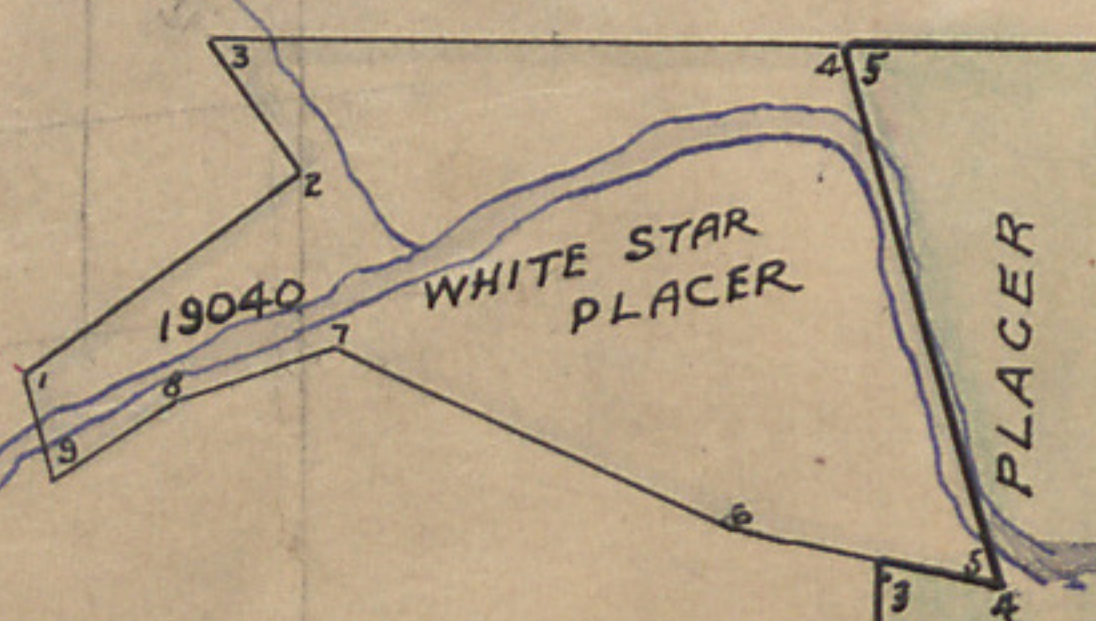
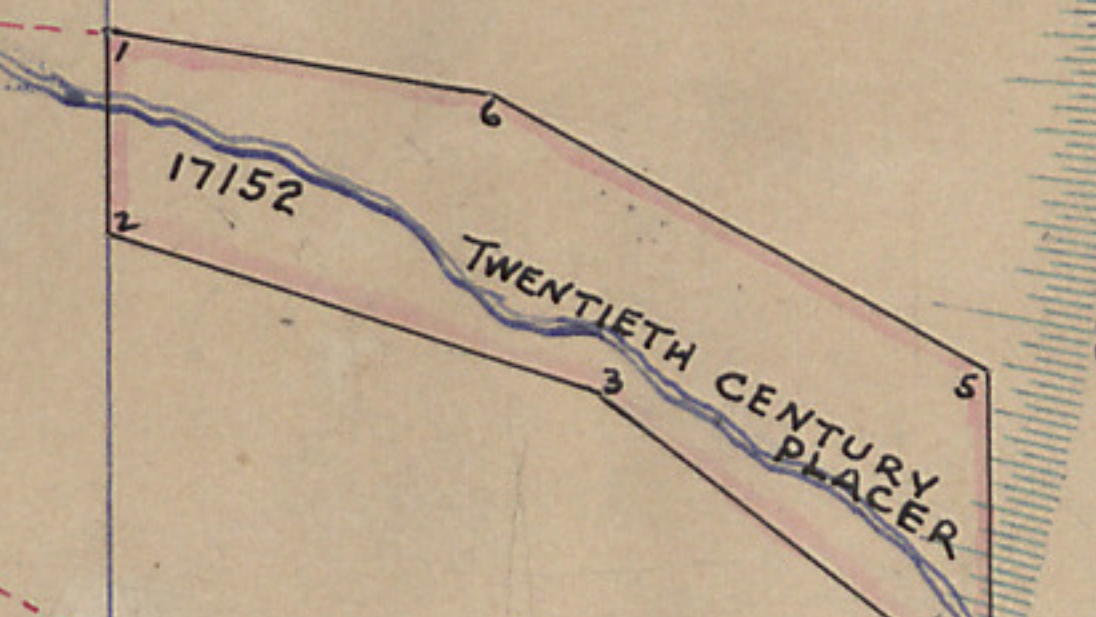
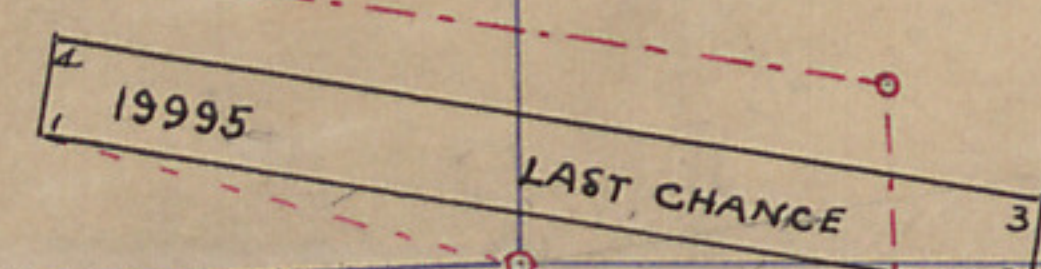
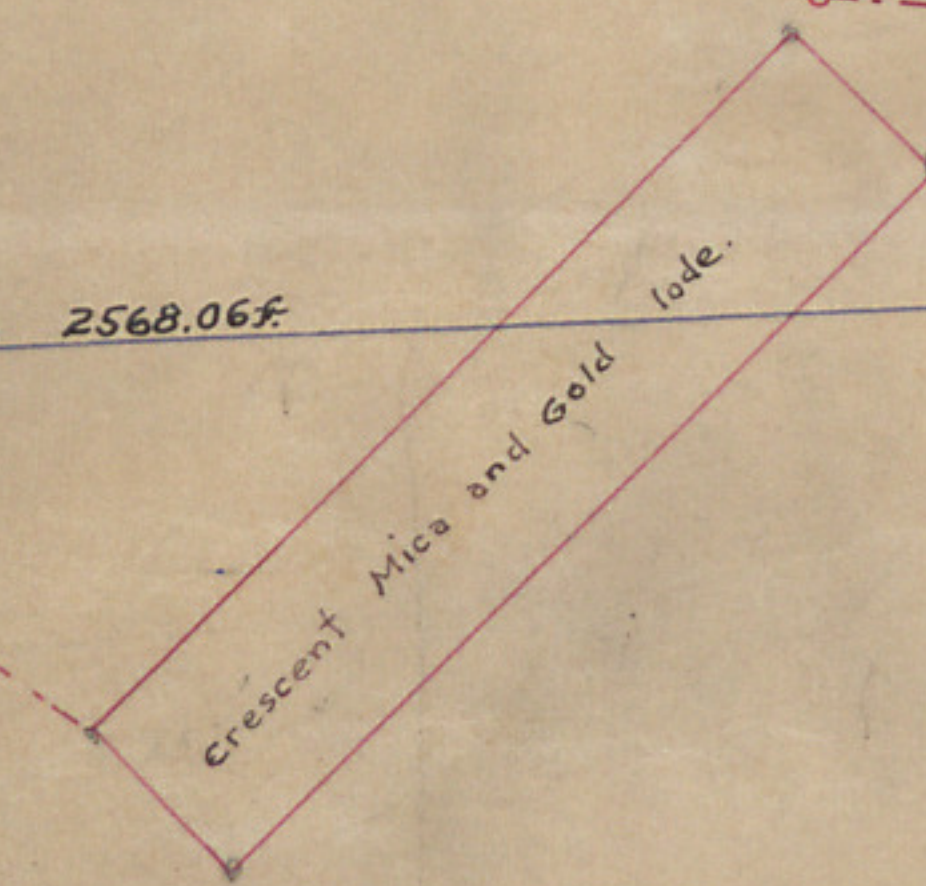
N. 0° 38' E. 2127.6 F.

GILPIN CLEAR CREEK CO. CO.

GILPIN CO. JEFFERSON CO.

CLEAR CREEK CO.

S. 53° 29' E. 3346.2 (Lyle F. Jones 1946 Group 363)



T.3 S., R. 72 W.

SCALE - 600 FEET TO AN INCH

June FRANKS 1933