

27

25

34

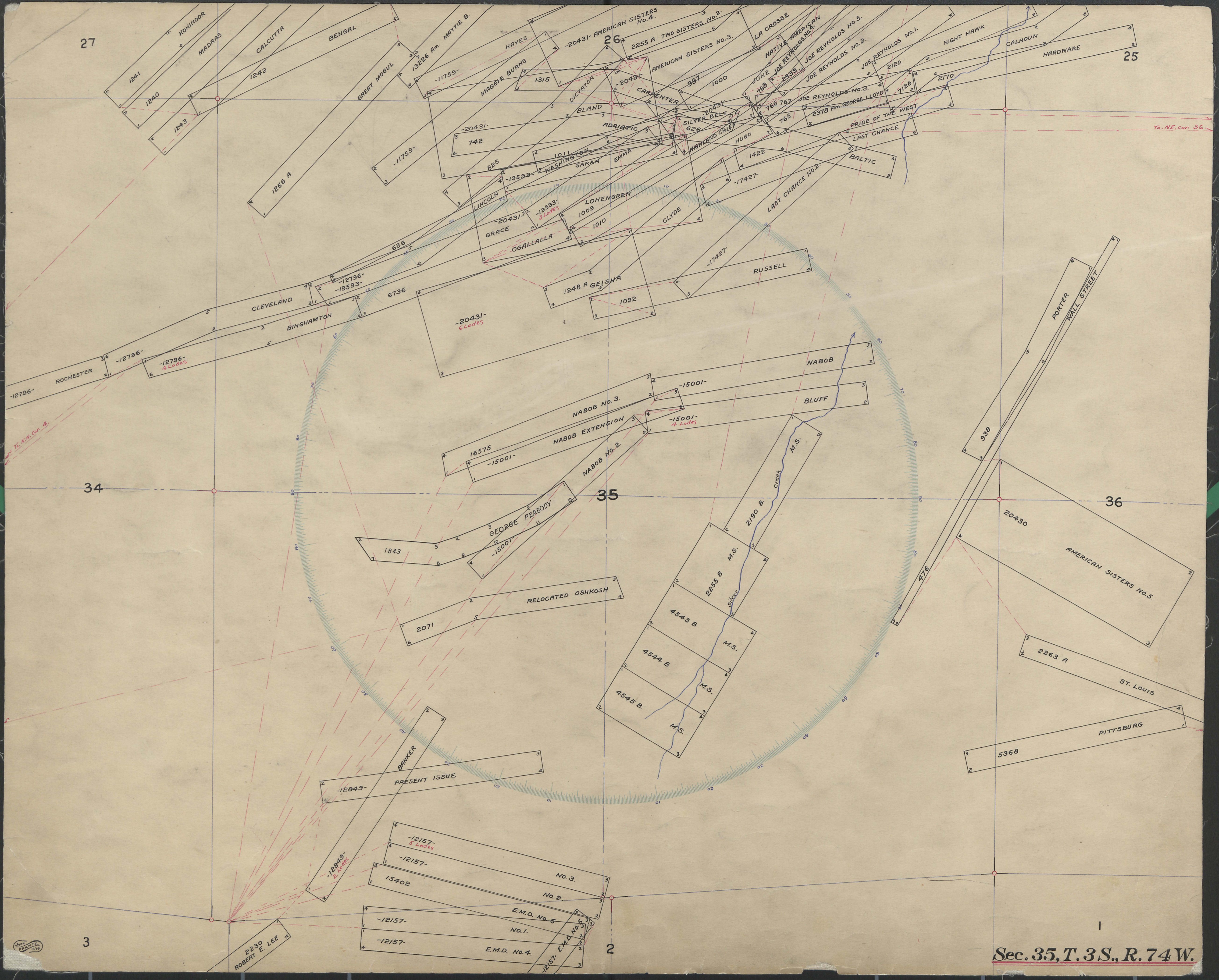
35

36

3

2

Sec. 35, T. 3 S., R. 74 W.



Map labels and annotations include:

- Section numbers: 25, 26, 34, 35, 36
- Streets: PORTER WALL STREET, BINGHAMTON, CLEVELAND, ROCHESTER, MADRAS, CALCUTTA, BENGAL, GREAT MOEUL, LINCOLN, WASHINGTON, SARAH, EMMA, HUGO, LAST CHANCE, BAL TIC, PRIDE OF THE WEST, 2378 Am. GEORGE LLOYD, JOE REYNOLDS No. 1, 2, 3, 4, 5, 6, 7, 8, 9, 10, 11, 12, 13, 14, 15, 16, 17, 18, 19, 20, 21, 22, 23, 24, 25, 26, 27, 28, 29, 30, 31, 32, 33, 34, 35, 36, 37, 38, 39, 40, 41, 42, 43, 44, 45, 46, 47, 48, 49, 50, 51, 52, 53, 54, 55, 56, 57, 58, 59, 60, 61, 62, 63, 64, 65, 66, 67, 68, 69, 70, 71, 72, 73, 74, 75, 76, 77, 78, 79, 80, 81, 82, 83, 84, 85, 86, 87, 88, 89, 90, 91, 92, 93, 94, 95, 96, 97, 98, 99, 100.
- Land parcels: NABOB, NABOB No. 1, 2, 3, NABOB EXTENSION, BLUFF, GEORGE PEABODY, RELOCATED OSHKOSH, 2071, 1843, 15001, 4543 B, 4544 B, 4545 B, 2255 B, 2190 B, 2255 A, 20431, 19593, 15001, 12796, 12796-4 Loads, 12796-19593, 12796-19593-3 Loads, 12796-19593-4 Loads, 12796-19593-5 Loads, 12796-19593-6 Loads, 12796-19593-7 Loads, 12796-19593-8 Loads, 12796-19593-9 Loads, 12796-19593-10 Loads, 12796-19593-11 Loads, 12796-19593-12 Loads, 12796-19593-13 Loads, 12796-19593-14 Loads, 12796-19593-15 Loads, 12796-19593-16 Loads, 12796-19593-17 Loads, 12796-19593-18 Loads, 12796-19593-19 Loads, 12796-19593-20 Loads, 12796-19593-21 Loads, 12796-19593-22 Loads, 12796-19593-23 Loads, 12796-19593-24 Loads, 12796-19593-25 Loads, 12796-19593-26 Loads, 12796-19593-27 Loads, 12796-19593-28 Loads, 12796-19593-29 Loads, 12796-19593-30 Loads, 12796-19593-31 Loads, 12796-19593-32 Loads, 12796-19593-33 Loads, 12796-19593-34 Loads, 12796-19593-35 Loads, 12796-19593-36 Loads, 12796-19593-37 Loads, 12796-19593-38 Loads, 12796-19593-39 Loads, 12796-19593-40 Loads, 12796-19593-41 Loads, 12796-19593-42 Loads, 12796-19593-43 Loads, 12796-19593-44 Loads, 12796-19593-45 Loads, 12796-19593-46 Loads, 12796-19593-47 Loads, 12796-19593-48 Loads, 12796-19593-49 Loads, 12796-19593-50 Loads, 12796-19593-51 Loads, 12796-19593-52 Loads, 12796-19593-53 Loads, 12796-19593-54 Loads, 12796-19593-55 Loads, 12796-19593-56 Loads, 12796-19593-57 Loads, 12796-19593-58 Loads, 12796-19593-59 Loads, 12796-19593-60 Loads, 12796-19593-61 Loads, 12796-19593-62 Loads, 12796-19593-63 Loads, 12796-19593-64 Loads, 12796-19593-65 Loads, 12796-19593-66 Loads, 12796-19593-67 Loads, 12796-19593-68 Loads, 12796-19593-69 Loads, 12796-19593-70 Loads, 12796-19593-71 Loads, 12796-19593-72 Loads, 12796-19593-73 Loads, 12796-19593-74 Loads, 12796-19593-75 Loads, 12796-19593-76 Loads, 12796-19593-77 Loads, 12796-19593-78 Loads, 12796-19593-79 Loads, 12796-19593-80 Loads, 12796-19593-81 Loads, 12796-19593-82 Loads, 12796-19593-83 Loads, 12796-19593-84 Loads, 12796-19593-85 Loads, 12796-19593-86 Loads, 12796-19593-87 Loads, 12796-19593-88 Loads, 12796-19593-89 Loads, 12796-19593-90 Loads, 12796-19593-91 Loads, 12796-19593-92 Loads, 12796-19593-93 Loads, 12796-19593-94 Loads, 12796-19593-95 Loads, 12796-19593-96 Loads, 12796-19593-97 Loads, 12796-19593-98 Loads, 12796-19593-99 Loads, 12796-19593-100 Loads.