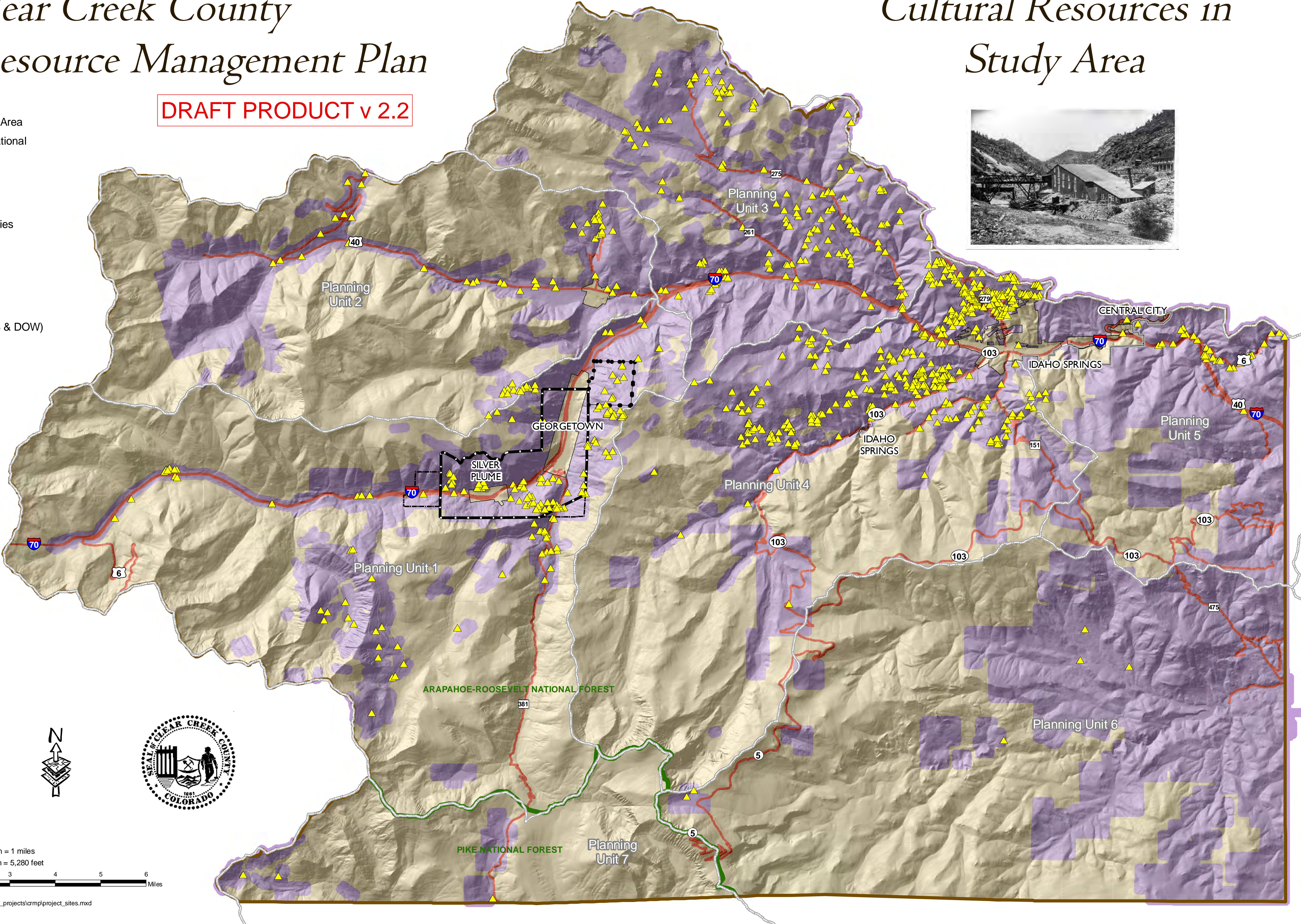


Clear Creek County Cultural Resource Management Plan

DRAFT PRODUCT v 2.2

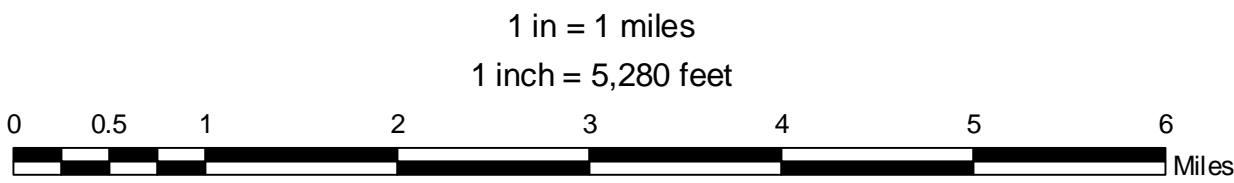
Cultural Resources in Study Area

- ▲ Cultural Resources - In Study Area
- Georgetown Silver Plume National Historic Landmark District
- Public Lands Extended Boundary
- Saxon Mtn. Study Area
- Modified Watershed Boundaries
- County Boundary
- National Forest Boundary
- Major Roads
- Study Area
- Outside of Study Area (USFS & DOW)



This map is a visual representation only, do not use for legal purposes. Map is not survey accurate and may not comply with National Mapping Accuracy Standards. Map is based on best available data as of Sept. 2009.

Sources:
Cultural Sites: Colorado State Historic Society, 08/2009
Study Area: Study area was derived by excluding all US Forest Service Lands, Division of Wildlife Lands, and lands within Municipal boundaries. A 500' buffer was extended into the USFS & DOW lands to ensure inclusion of Cultural Resources that may have bordered those areas.



h:\arcmap_projects\spec_projects\crmp\project_sites.mxd